

# Longing to Be With Me

Phil Hill

♩ = 130

Em D C D

How much time\_\_\_ have I let slip by?

Detailed description: This block contains the first line of music, measures 1 through 4. The key signature is one sharp (F#) and the time signature is 4/4. The melody starts with a quarter rest, followed by quarter notes G4, A4, B4, and C5. The lyrics are "How much time\_\_\_ have I let slip by?". Chord symbols Em, D, C, and D are placed above the staff.

5 Em D C D

How man - y years\_\_\_ have come and gone?

Detailed description: This block contains the second line of music, measures 5 through 8. The melody continues with quarter notes D5, E5, F#5, and G5. The lyrics are "How man - y years\_\_\_ have come and gone?". Chord symbols Em, D, C, and D are placed above the staff.

9 Em D C D

Where was the place\_\_\_ I last saw\_\_\_ You?\_\_\_

Detailed description: This block contains the third line of music, measures 9 through 12. The melody features a half note G4 and a quarter note A4. The lyrics are "Where was the place\_\_\_ I last saw\_\_\_ You?\_\_\_". Chord symbols Em, D, C, and D are placed above the staff.

13 Em D C

Just don't know,\_\_\_ has it been that long?

Detailed description: This block contains the fourth line of music, measures 13 through 16. The melody starts with a quarter rest, followed by quarter notes G4, A4, B4, and C5. The lyrics are "Just don't know,\_\_\_ has it been that long?". Chord symbols Em, D, and C are placed above the staff.

17 Em D C D

For so long\_\_\_ now I've\_\_\_ been run-ning,

Detailed description: This block contains the fifth line of music, measures 17 through 20. The melody continues with quarter notes D5, E5, F#5, and G5. The lyrics are "For so long\_\_\_ now I've\_\_\_ been run-ning,". Chord symbols Em, D, C, and D are placed above the staff.

21 Em D C D

hid - ing from what\_\_\_ I can - not face.

Detailed description: This block contains the sixth line of music, measures 21 through 24. The melody starts with a quarter rest, followed by quarter notes G4, A4, B4, and C5. The lyrics are "hid - ing from what\_\_\_ I can - not face.". Chord symbols Em, D, C, and D are placed above the staff.

25 Em D C D

Long-ing to know\_\_\_ Your pres - ence once\_ more,\_\_\_

Detailed description: This block contains the seventh line of music, measures 25 through 28. The melody features a half note G4 and a quarter note A4. The lyrics are "Long-ing to know\_\_\_ Your pres - ence once\_ more,\_\_\_". Chord symbols Em, D, C, and D are placed above the staff.

29 Em D C

long-ing to feel\_\_\_ Your sweet em - brace.

Detailed description: This block contains the eighth line of music, measures 29 through 32. The melody starts with a quarter rest, followed by quarter notes G4, A4, B4, and C5. The lyrics are "long-ing to feel\_\_\_ Your sweet em - brace.". Chord symbols Em, D, and C are placed above the staff.

33 **Em** **D**

When I'd lost all hope, giv - en up to die.\_\_\_\_

37 **Em** **D**

I called out Your name,\_\_\_\_ You heard my cry.\_\_\_\_\_

41 **G** **D**

Beat-en by the world, crum-bling with - in.\_\_\_\_

45 **G** **D** **C**

I cried out to You,\_\_\_\_ You re - stored me a - gain.\_\_\_\_\_

49 **D** **G** **D**

\_\_\_\_ What would I do\_\_\_\_\_

53 **C** **D** **C** **D**

with-out You\_\_\_\_ here, al - though I failed\_\_\_\_ to see\_

57 **G** **D** **G** **D**

\_\_\_\_ that You\_\_\_\_ have al - ways

61 **C** **D** **C** **D**

been so\_\_\_\_ near, long - ing to be\_\_\_\_ with

65 Em



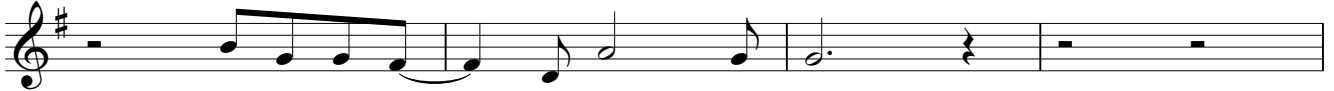
me.

67 Em



I've come to a place\_\_ I've known be - fore,

71 Em



filled with de - sire\_\_ to start a - new.

75 Em



The door is o - pen and You a - wait.\_\_

79 Em



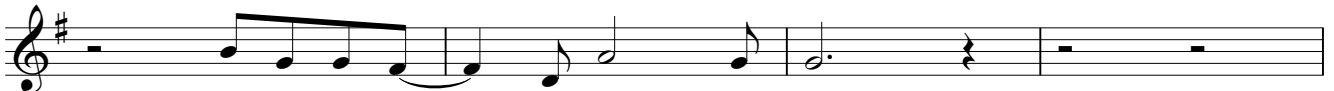
I need to trust\_\_ and fol - low through.

83 Em



To know Your voice,\_\_ to hear Your call,

87 Em



ev - ry de - sire\_\_ to be of You.

91 Em



Hun - ger - ing for\_\_ Your pres - ence once\_\_ more,\_\_

95 **Em** **D** **C**

want - ing to know\_\_ and treas - ure You.

99 **Em** **D**

Je - sus, You're the One\_\_ Who has brought me through,\_\_

103 **Em** **D**

though I a - ban - doned\_\_ com - mit - ment to You.\_\_\_\_\_

107 **G** **D**

I'm weak and so frail Oh, help me to do

111 **G** **D** **C**

an - y - thing it takes\_\_ to\_\_ stay true to You.\_\_\_\_\_

115 **D** **G** **D**

What would I do\_\_\_\_\_

119 **C** **D** **C** **D**

with - out You\_\_ here, al - though I failed\_\_ to see\_\_

123 **G** **D** **G** **D**

that You\_\_ have al - ways

127 C D C D

been so near, long - ing to be with

131 G G D

me. that You have al - ways

135 C D C D

been so near, long - ing to be with

139 G C G

me.